



**Phoenix 355 Progress puls TKM**



- Inverter welding machine, DC, pulse
- Modular (gas- or water-cooled)
- Progress: Setting of all welding parameters and functions and display of the welding parameters on welding machine, one-knob operation (Synergic) – easy setting of operating point, pre-programmed JOBs (welding tasks), selection via JOB list
- Portable, compact
- Connection capability for remote control, function torch, cooling module
- Cooling module can be changed with no need for tools or specialist staff, and no need to open welding machine
- 4-roller wire feed equipped for 1.0 mm + 1.2 mm steel wires
- 5 m mains supply lead
- Trolley and cooling module optionally available

**rootArc –**

- short arc with good modelling properties for easy gap-bridging and positional welding

**forceArc –**

- low-heat, directionally stable and powerful arc with deep fusion penetration for the upper power range

**Pulsed arc –**

- controlled, short-circuit-proof pulsed arc for all positions, especially for transition arcs

**Mains voltage (tolerances)** 3 x 400 V (-25 % - +20 %)

**Mains fuses (slow-blow)** 3 x 16 A

**Setting range for welding current** 5 A - 350 A

**Duty cycle 40 °C** 350 A / 35 %

**Duty cycle 40 °C** 300 A / 60 %

**Duty cycle 40 °C** 220 A / 100 %

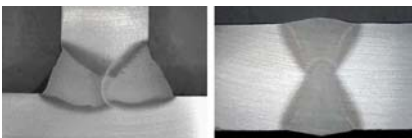
**Dimensions LxWxH in mm** 624 x 298 x 480

**Weight** 33 kg



**Progress control – wide range of possible applications with convenient operation**

Up to 115 pre-programmed JOBs (welding tasks) for the commonest welding tasks as well as Synergic operation with self-explanatory operating panel



**forceArc – extremely productive with uncompromising quality**

Up to 50% lower production costs: a masterpiece of innovative MIG/MAG process engineering: powerful forced arc, deep fusion penetration and virtually spatter-free weld seams of the highest quality.



**rootArc – reliable short arc welding in all positions**

Short arc with easy weld modelling capabilities for easy gap-bridging and positional welding



**Phoenix – multi-talented**

Pulse arc MIG/MAG, standard, forceArc, rootArc, flux cored wire as well as TIG (lift arc) MMA and air arc gouging – a wide variety of processes, one power source



**Innovative pulse welding for stainless steel and aluminium**

The perfect pulse welding job guarantees superb welding results when joining stainless steel and aluminium, thanks to controlled globular transfer and targeted, adapted heat input



**Phoenix – wide range of accessories and options**

Simple to operate: the Powercontrol torch allows all programs, operating modes, processes and the up/down function to be activated at the touch of a button.