



Phoenix 355 Progress puls TDM



- Inverter welding machine, DC, pulse
- Portable, decompact, modular
- Modular (gas- or water-cooled)
- Multiprocess: MIG/MAG, TIG lift arc and MMA
- Progress: All welding parameters and functions are set and displayed on the wire feeder, one-knob operation (Synergic) – easy setting of operating point, pre-programmed JOBS (welding tasks), selection via JOB list
- Tool-free polarity selection: ideal for welding self-shielding flux cored wires
- Connection capability for remote control, function torch, cooling unit
- Protective earth monitoring (PE)
- Cooling unit can be changed with no need for tools or specialist staff and no need to open the welding machine
- 4-roller wire feed equipped for 1.0 mm + 1.2 mm steel wires
- 5 m mains supply lead
- Trolley and cooling unit optionally available

Pulsed arc –

Controlled, short circuit-proof pulsed arc for all positions

forceArc –

Low-heat, directionally stable and powerful arc with deep penetration for the upper power range

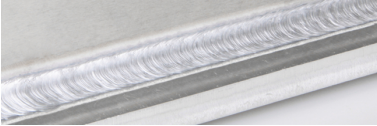
rootArc –

Short arc with good modelling properties for easy gap-bridging and positional welding

	MIG/MAG		TIG		MMA	
Setting range for welding current	5 A - 350 A		5 A - 350 A		5 A - 350 A	
Duty cycle at ambient t.e	25 °C	40 °C	25 °C	40 °C	25 °C	40 °C
100 %	–	350 A	–	350 A	–	350 A
Open circuit voltage	80 V					
Mains frequency	50 Hz / 60 Hz					
Max. connected load	12.7 kVA		9.7 kVA		13.8 kVA	
Recommended generator power	13.1 kVA		17.2 kVA		18.7 kVA	
Drive rollers	4					
Wire speed	0.5 m/min - 24 m/min					
Dimensions, machine, LxWxH in mm	624 x 298 x 480					
Wire feeder LxWxH in mm	690 x 300 x 410					
Weight, machine	41 kg					
Weight, wire feeder	15.1 kg					
Weight, cooling unit	16.5 kg					
Protection classification	IP 23					
Insulation class	H					
Torch connection	Euro torch connector					
Cooling output	1000 W (1l/min)					
Tank capacity	4 l					
Flow rate	5 l/min					
Max. output pressure	3.5 bar					
Standards	IEC 60 974-1; -5; -10 / CE / S-Safety sign / EMC class A					



Phoenix 355 Progress puls TDM



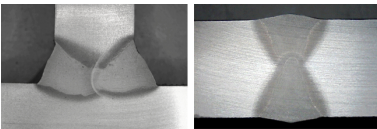
Innovative pulse welding for stainless steel and aluminium

The perfect pulse welding job guarantees superb welding results when joining stainless steel and aluminium, thanks to controlled globular transfer and targeted, adapted heat input



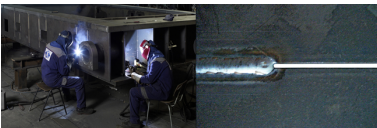
Progress control – wide range of possible applications with convenient operation

Up to 115 pre-programmed JOBs (welding tasks) for the commonest welding tasks as well as Synergic operation with self-explanatory operating panel



forceArc – extremely productive with uncompromising quality

Up to 50% lower production costs: a masterpiece of innovative MIG/MAG process engineering: powerful forced arc, deep penetration and virtually spatter-free welds of the highest quality.



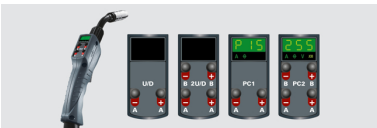
rootArc – reliable short arc welding in all positions

Short arc with easy weld modelling capabilities for easy gap-bridging and positional welding



Numerous processes – one power source

Multi-talented: MIG/MAG pulse, standard, forceArc, rootArc, flux cored wire as well as TIG (lift arc), MMA and gouging



Phoenix – wide range of accessories and options

Simple to operate: the Powercontrol torch allows all programs, operating modes, processes and the up/down function to be activated at the touch of a button.