

Precision, Strength & Finish

9kg Swap N Go



REFILL for
\$25
Inc. GST

With any Sievert products
purchased on page 8.
Conditions apply.

**20%
OFF**

Selected
TIG & MIG
accessories
& consumables

See pages 2 & 11.

**20%
OFF**

3M™ Adflo™
battery & charger
upgrade



See page 7 for details.

TIG welding accessories and consumables

Tungsten Electrodes

• 150 mm length

20%
OFF

Tip Colour	Type	Dia.	Qty	Part No.	Inc.GST
White	Zirconiated 0.8%	1.6 mm	10 pk	BOC503016PK	\$27.45
		3.2 mm	10 pk	BOC503032PK	\$76.70
Grey	Ceriated DC	1.6 mm	10 pk	BOC502016PK	\$26.50
		2.4 mm	10 pk	BOC502024PK	\$43.40
Blue	Lanthiated AC & DC	1.6 mm	10 pk	BOC504016PK	\$26.60
		2.4 mm	10 pk	BOC504024PK	\$45.50
		3.2 mm	10 pk	BOC504032PK	\$70.99
Turq	Rare Earth	1.6 mm	3 pk	BOC60116	\$10.50
		2.4 mm	3 pk	BOC60124	\$17.30
		3.2 mm	3 pk	BOC60132	\$36.60
Red	Thoriated 2% DC	3.2 mm	10 pk	BOC501132PK	\$74.95

TIG Rods

Description	Dia.	Weight	Part No.	Inc.GST
Profill 70S-6 Mild Steel	1.6mm	5kg	11605S6	\$66.50
	2.4mm	5kg	12405S6	\$57.85
Profill 308LSi SS	1.6mm	5kg	BTGS308L16	\$116.80
	2.4mm	5kg	BTGS308L24	\$108.00
Profill 309LSi SS	1.6mm	5kg	BTGS309L16	\$152.00
	2.4mm	5kg	BTGS309L24	\$148.00
Profill 316LSi SS	1.6mm	1kg	BTGS316L161	\$64.90
	2.0mm	5kg	BTGS316L20	\$130.40
	2.4mm	5kg	BTGS316L24	\$133.60
Aluminium 4043	1.6mm	2kg	S431602	\$41.95
	2.4mm	2kg	S432402	\$40.35
Aluminium 5356	1.6mm	2kg	S531602	\$43.20
	2.4mm	2kg	S532402	\$41.60

The right tools for precision TIG welding



Gas Saver Kits

for BOC17, BOC18, BOC26 Torches

Make your shielding gas last longer

- Saves up to 40% of shield gas consumption
- Provides better gas coverage versus standard collet bodies
- Allows up to 6 times the diameter of electrode stick-out from gas nozzle
- Improves visibility

Type	Dia.	Part No.	Inc.GST
Alumina Cup	1.6 mm	BOC3GS16	\$17.95
	2.4 mm	BOC3GS24	\$21.75
	3.2 mm	BOC3GS32	\$17.95
Clear Cup	1.6 mm	BOC3GS16-P	\$38.50
	2.4 mm	BOC3GS24-P	\$39.55
	3.2 mm	BOC3GS32-P	\$40.55

Gas saver kit extras

Description	Part No.	Inc. GST
Gas Saver Kit - Clear nozzle	BOC3P8GS	\$18.40
Gas Saver Heatshield	BOC3HSGS	\$12.60



Wedge Collet

- Lasts 10 times longer than standard split collets
- Improves arc starts and arc stability
- Requires less pressure from the back cap improving thread life on torch head
- Tungsten is in direct contact with collet body creating less resistance heating
- Runs cooler, minimising down time replacing collets
- Eliminates twisting and deformation of collet
- Fits any standard collet body or gas lens

Type	Size	Part No.	Inc.GST
Standard	1.6 mm	BOC3C16GS	\$11.45
	2.4 mm	BOC3C24GS	\$11.45
	3.2 mm	BOC3C32GS	\$12.60



40%
OFF

Weld Guard Premium TIG Glove

• 15 cm

Part No. W8202G/K

\$15²⁵ Pair

Keep safe from tungsten dust exposure!

Consistent Results

Stepless grinding angles 20°- 60°

15%
OFF



Turbo-Sharp X Tungsten Grinder

- Stop wearing grooves in your wheel grinder
- Improve your weld quality
- Reduce tungsten waste
- Enclosed electrode grinder offers excellent dust collection
- Standard head for diameters: 1.0mm, 1.6mm, 2.4mm and 3.2mm
- Angles adjustable from 20-60 degrees
- Consistent tip geometry
- Eliminate grinding wheel contamination
- 2 year warranty

Part No. TS10-230AUS

\$1,198⁵⁰

Available in selected Gas & Gear stores



Tetrix 230 AC/DC Comfort™ 2.0 VRD

- Inverter technology performs flawless joining of unalloyed, low-alloy and high alloy steels
- MMA capability with automated pulsing and anti-stick function
- Fully Australian Standards compliant VRD to AS 1674-2 Category C Environment and IEC 60974-1

Package consists of:

- Power source
- Regulator
- Gas-cooled torch (SR26) 4m
- Gas hose and connector 2m
- Work return lead 3m
- Operating manual

Part No. **\$4,888³⁵**
091-000239-28532



Smootharc 185 AC/DC TIG

- Inverter based machine with MMA capabilities
- Ideal for sheet metals, stainless steel and aluminium fabrications
- Pulse capability ideal for heat control when working on thin metals

Package consists of:

- Power source
- BOC TIG torch 8m
- Electrode holder and work return lead
- Regulator
- Gas hose
- Operating manual

Part No. **\$1,279⁸⁰**
BOC185ACDC/FC



Smootharc MMA 131VRD & 171VRD

Lightweight and portable, these welders deliver a highly efficient output. MMA and TIG - two powerful functions in one compact unit. (Note: DC operation not suitable for TIG welding of aluminium).

Package consists of:

- Power source
- Electrode holder with cable (Dinse connector)
- Work clamp with cable (Dinse connector)
- Primary cable with plug
- Operating manual

Part No.	Inc. GST
MMA131VRD	\$236.80
MMA171VRD	\$280.80

Step up your TIG welding with these add ons

Control your amperage with pedal power



RTF1 Foot Control for Tetrix 230 AC/DC Comfort™ 2.0 VRD

- Adjustable welding current (0% to 100%) depending on the main current preselected at the welding machine.
- 5m control cable, 19 pin connection
- Suits EWM Tetrix and Smootharc Elite® TIG machines only

Part No. **\$529⁵⁵ EACH**
094-006680-00000



BOC Foot Control for Smootharc 185 AC/DC TIG

- Adjustable welding current (0% to 100%) depending on the main current preselected at the welding machine.
- 3m control cable, 5 pin connection
- Suits Smootharc TIG 185ACDC/FC only

Part No. **\$108⁰⁰ EACH**
N-R021014



MMA TIG Torch Package

Use your Smootharc MMA131VRD & 171VRD for TIG welding with the MMA TIG Torch Package

- Cable length: 4m
- Torch body: Rigid
- Valve
- Duty cycle: 150A @ 100% DC-
- Gas cooled

Part No. MMA-TIG **\$136⁸⁵ EACH**

Cools your torch for a longer duty cycle

Get the best out of your ewm welding machine with these cooling units



Cooling Units

- Cooling unit for water-cooled welding torches
- Modular design, tool-free assembly
- Cooling capacity 1 L/min: 800 W

- Max. flow rate: 5 L/min
- Max. output pressure: 3.5 bar
- Tank capacity: 4.0 L

Name	Suits	Part No.	Inc. GST
1 COOL35 U31	EWM Tetrix 300ACDC	090-008235-00502	\$1,538.40
2 COOL40 U31	Smootharc Elite® TIG 230ACDC	090-008593-00502	\$1,609.60
3 COOL41 U31	Smootharc Elite® TIG 300-2	090-008600-00502	\$1,539.20

Available in selected Gas & Gear stores

Get the right gas working for you

TIG welding of stainless steel – Argon versus ARGOPLAS® 5



Competence® Line

Welding gas:	Argon
Welding speed:	35 cm/min, mechanised welding
Parent material:	304, t= 4 mm
Filler metal:	308LSi



Performance® Line

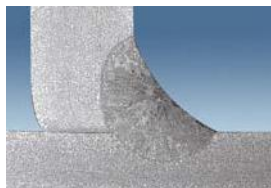
Welding gas:	ARGOPLAS® 5
Welding speed:	55 cm/min, mechanised welding
Parent material:	304, t= 4 mm
Filler metal:	308LSi

ARGOPLAS® 5 improves speed of welding and penetration

Manual welding of stainless steel 1.4301, sheet thickness 4 mm



TIG DC, argon, vs = 13 cm/mm



TIG AC, ARGOPLAS®, vs = 18 cm/mm

Saving you time and money

Adding small amounts of hydrogen to argon can:

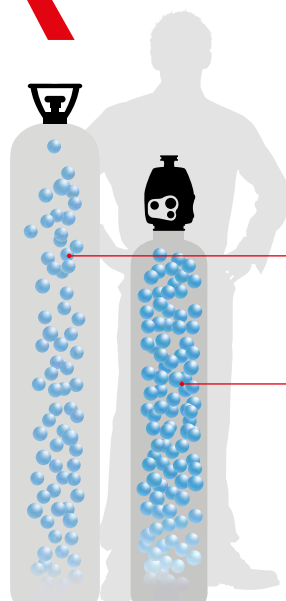
- Accelerate the TIG welding process
- Increase the heat efficiency of the arc
- Improve penetration and wetting ability
- Enhance the appearance of the weld
- Help reduce clean up time

Good things come in smaller packages

F3VIPR

Available in 20 different welding gas blends

Talk to us today and make the switch.
Call 131 262 or visit your nearest BOC Gas & Gear.



Volume and size

Inbuilt regulator

Portability

ARGOSHIELD®
Universal

G
065G
8.7m³

F3
065F3VIPR
10.0m³



Stainless Steel Fabrication



“Since working with BOC and implementing our automated machinery, we have significantly increased our productivity levels. Changing our welding gas mixture has also given us a faster welding process, delivering stronger fusion and an aesthetically better result.”

Tom

General Manager
A&G Engineering, Griffith NSW
www.agengineering.com.au

Grinders and abrasives

metabo® flexOvit®



Metabo 125mm 850W Angle Grinder

- Side switch for easy operation
- Auto stop carbon brushes
- 850 watt motor

Style No. W85125

\$120⁶⁵ EACH



Metabo 125mm 1250W Angle Grinder

- Powerful and robust angle grinder with highest power density in its class for quick work progress
- 1250 watt motor

Style No. W12-125Q

\$274⁵⁵ EACH



Australian-made high performance abrasives



Metal Cut-Off Wheel

- General purpose cutting of stainless steel and ferrous metals including bar and tube.
- Fast cutting with excellent life.
- A36SB

Size (mm)	Part No.	Inc. GST
356 × 3.0 × 25.4	1935625	\$7.60

20% OFF



10-25% OFF

Ultra Thin Mega Inox Premium Cut-Off Wheels – Stainless Steel

- Ultra thin Zirconia, premium grade - for cutting stainless steel, alloy steels and hard ferrous metals. Free of iron, sulphur and chlorine.
- A46T-BF41 Mega Inox

Size (mm)	Part No.	Inc. GST
100 × 1.0 × 16	15102010	\$1.90
100 × 1.6 × 16	15102016	\$1.95
115 × 1.0 × 22	15115010	\$1.95
125 × 1.0 × 22	15127010	\$1.90
125 × 1.0 × 22 Tin (25)	66253371005	\$49.50
125 × 1.0 × 22 Bucket (100)	66252838356	\$180.00
125 × 1.6 × 22	15127016	\$2.20
230 × 2.0 × 22	15230020	\$4.30



General Purpose Flat Metal Cut-Off Wheels

- General purpose cutting of ferrous metals. Iron-free suitable for cutting stainless steel.
- A36S-BF41

Size (mm)	Part No.	Inc. GST
100 × 2.5 × 16	1010216	\$1.60
115 × 2.5 × 22	1011522	\$1.80
125 × 2.5 × 22	1012722	\$1.90
180 × 2.5 × 22	1017822	\$2.60
230 × 2.5 × 22	1023022	\$3.20

25% OFF



General Purpose Depressed Centre Metal Cut-Off Wheels

- General purpose cutting of ferrous metals including structural steel and sheet metals.
- A24/30T-BF27

Size (mm)	Part No.	Inc. GST
125 × 3.4 × 22	6012734	\$2.40
230 × 3.4 × 22	6023034	\$4.80

20% OFF



Multi Material Cut-Off Wheel

- Great for tradies, one disc cuts most materials
- Suitable for a variety of materials including masonry, steel, stainless steel, aluminium, PVC & ceramics
- C60T-BF41

Size (mm)	Part No.	Inc. GST
125 × 1.0 × 22	66253370636	\$2.80

15% OFF

Speedglas with Adflo PAPR



3M™ Speedglas™ Welding Helmet 9100XXi with Adflo PAPR

- Made in Sweden with Auto-On
- Largest viewing area on the market with peripheral Side Windows
- New True-View for colour and contrast
- Highest possible optical classification (1/1/1)
- Advanced TST (TIG Sensor Technology) down to industry leading 1 amp
- New upgraded Adflo is super light with rapid charge
- Required minimum protection factor of 50
- Revolutionary powered airflow delivery results in improved respiratory protection and comfort (AS/NZS1716)
- Two adjustable air flow settings 170/200 litres per minute
- High impact protection (AS/NZS1337.1)
- Available in Standard (approx. 8 hour run time) or Heavy Duty (approx. 12 hour run time)



3M™ Speedglas™ Welding Helmet 9100XXi Air with Adflo PAPR

- New external button for grinding and memory mode



3M™ Speedglas™ Flip-Up Welding Helmet 9100XXi FX Air with Adflo PAPR

- Flip-up mechanism reveals a clear high impact grinding visor (AS/NZS1337.1)



3M™ Speedglas™ Safety & Welding Helmet 9100XXi MP Air with Adflo PAPR

- Comfortable safety helmet provides overhead protection at all times (AS/NZS1801)
- Flip-up mechanism reveals a clear high impact grinding visor (AS/NZS1337.1)

Description	Part No.	Inc.GST
Standard Adflo PAPR	AWS507726	\$1,757.70

Description	Part No.	Inc.GST
Standard Adflo PAPR	AWS547726	\$1,917.90
Heavy Duty Adflo PAPR	AWS547726HD	\$2,011.95

Description	Part No.	Inc.GST
Standard Adflo PAPR	AW557726	\$2,106.75

Upgrade your old Adflo battery and get **20% OFF**
NEW 3M™ Adflo™ Lithium-Ion battery and charger upgrade kit

3M™ Adflo™ Lithium-Ion battery and charger upgrade kits

Replaces discontinued Ni-MH Adflo batteries
[Order your kit today for quick delivery](#)

Upgrade your Adflo PAPR system to the new Li-Ion battery and Li-Ion charger. The new Li-Ion batteries feature One Hour Rapid Charge (0-80% charge in 1 hour) and are 40% lighter than the old Ni-MH (black) Adflo batteries. With the old Ni-MH (black) batteries discontinued, now is the time to upgrade to Li-Ion!

Description	Part No.	Inc.GST
Standard Adflo Battery Upgrade Kit* (approx. 8 hours run time)	AWS837630C	\$382.70
Heavy Duty Adflo Battery Upgrade Kit* (approx. 12 hours run time)	AWS837631C	\$440.55

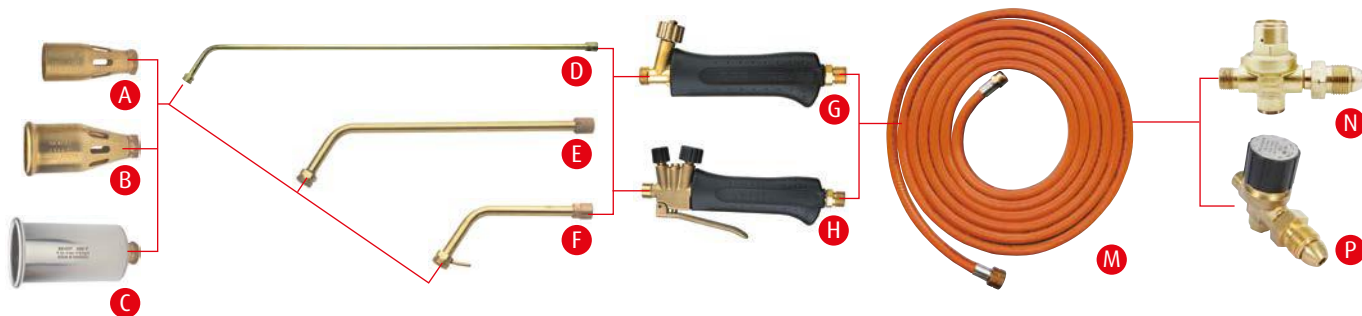
*Includes charger.



**40%
Lighter**



Save **20% OFF** these SIEVERT products



Sievert Pro Power Burners

Heavy duty, yet light weight. Strong and windproof flames. Ideal for drying, bitumen laying, detail and field torching, preheating and other heat demanding applications. Recommended working pressure 4 bar.

	Dia.	Gas Consumption	Effect	Part No.	Inc.GST
	28 mm	600 g/h @ 2 bar	7.7 kW	SV2941	\$50.80
A	35 mm	3,350 g/h @ 4 bar	43.5 kW	SV2943	\$60.00
B	50 mm	6,700 g/h @ 4 bar	86 kW	SV2944	\$104.00
C	60 mm	8,250 g/h @ 4 bar	114 kW	SV2960	\$120.00

Sievert Pro Neck Tubes

- High quality brass
- Longer neck tubes are recommended for larger jobs like roofing and road works

	Neck Length	Part No.	Inc.GST
D	600 mm	3508	\$82.40
E	350 mm	SV3510	\$54.55
F	180 mm	SV3509	\$45.35

G Sievert Pro 86 Handle

- Single valved handle mainly for smaller burners
- The spindle and valve is designed to give a very exact and quick flame setting
- The springloaded metal knob gives a precise and stable setting for the finest of flames
- All metal parts made of high quality brass
- Ergonomic designed plastic composite handle
- Hose connection M14 x 1mm

H Sievert Pro 88 Handle

- Double valved handle mainly for larger burners
- Incorporates one main valve and one economiser valve enabling a gas saving pilot flame
- Trigger for instant shifting between pilot and main flame and for pulsing the main flame
- All metal parts made of high quality brass
- Ergonomic designed plastic composite handle
- Hose connection M14 x 1mm

	Description	Part No.	Inc.GST
G	Sievert Pro 86 Handle	SV3486	\$92.80
H	Sievert Pro 88 Handle	3488	\$156.80

M 8mm LPG Hoses

- AGA Approved Hose AS/NZS 1869 Class C
- 2.6 MPa working pressure.
- Inlet: 3/8" BSP LH F
- Outlet: M14 x 1mm F

30% OFF

	Length	Part No.	Inc.GST
	2m	BOCSL0802A-M14	\$21.00
	4m	BOCSL0804A-M14	\$29.50
	6m	BOCSL0806A-M14	\$37.80
	9m	BOCSL0809A-M14	\$46.30

Regulators

- Inlet: POL
- Outlet: 3/8" BSP LH

	Pressure	Max. Capacity	Part No.	Inc.GST
N	Fixed 2 bar	6 kg/h	309121	\$107.20
P	Adjustable 1-4 bar	5-20 kg/h	SV3061-11	\$125.60

Available in selected Gas & Gear stores

BOC Twin Hose 5mm Assembled



Length	Type	Part No.	Inc. GST
5 m	Oxygen-Acetylene	BOCTW0505A	\$46.20
10 m	Oxygen-Acetylene	BOCTW0510A	\$50.50
15 m	Oxygen-Acetylene	BOCTW0515A	\$55.60
20 m	Oxygen-Acetylene	BOCTW0520A	\$61.30
5 m	Oxygen-LPG	BOCTL0505A	\$51.90

Tradeflame



Tradeflame Blow Torch Kits

- Complete with MAP-Pro gas cylinder 399g with BOM fitting
- Piezo auto ignition
- Ideal for brazing, soft soldering & heating applications
- Super Cyclone Burner with increased tip diameter

Description	Part No.	Inc.GST
Tradeflame Swivel Blow Torch Kit	211056	\$76.80
Tradeflame Blow Torch Kit	211067	\$95.20
Disposable TF/Ultra Gas Cartridge	WMC-US	\$15.35



REFILL for
\$25
Inc.GST

Swap N Go - 9kg
when you purchase
these Sievert products.

Conditions apply.

Purchase any Sievert product on this page and receive a \$25 REFILL on your existing Swap N Go 9kg cylinder.

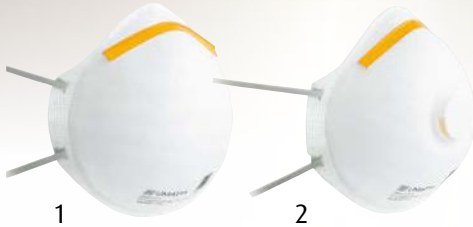
Pick-up instore only.

Limit of one REFILL per customer.

Respirators and welding helmets



UMATTA® Disposable Respirators



1

2



3

4

P1 Cupped Masks

Protection

Dusts and mists produced where sanding, grinding, crushing and processing of minerals is required.

Applications

Cement, glass, textiles, lead, coal, grain, wood, dust, asbestos and many others commonly found in mining, building and farm work.

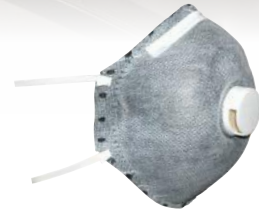
P2 Cupped Masks

Protection

Dusts and mists produced where sanding, cutting, handling fibreglass, removing paint, handling timber or plasterboard is required.

Applications

Marble, silica, ferrous metals, pharmaceuticals, pollen, ceramics, glass, cotton, coal, aluminium, timbers, asbestos and many others commonly found in foundry, chemical and agricultural industries.



45%
OFF

UMATTA® Disposable Welding Respirator with Activated Charcoal and Valve P2

Ideal for protection against mechanically and thermally generated particles and nuisance organic vapours such as welding fumes.

Valved for extra comfort and ease of breathing in hot or heavy labour environments.

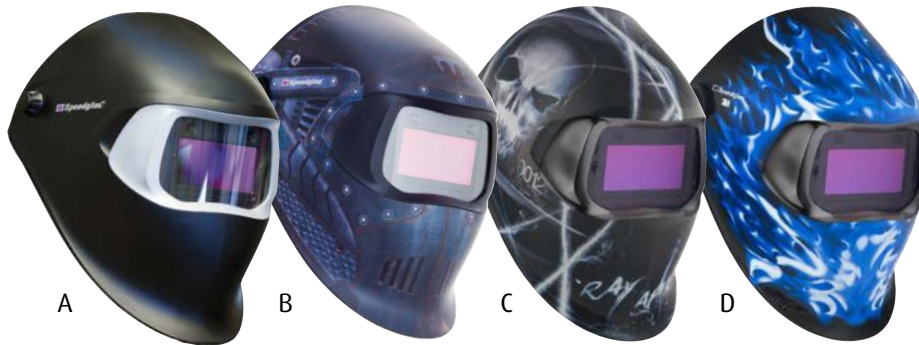
• Box of 12

\$42⁷⁰

Part No. DRMWCP2V

Description	Qty	Part No.	Inc.GST
1 P1 Cupped Respirator	(Box of 20)	DRM1CP1	\$19.20
2 P1 Cupped Respirator with Valve	(Box of 12)	DRM1CP1V	\$24.90
3 P2 Cupped Respirator	(Box of 20)	DRM1CP2	\$24.90
4 P2 Cupped Respirator with Valve	(Box of 12)	DRM1CP2V	\$30.20

45%
OFF



A

B

C

D

3M™ Speedglas™ Welding Helmet Series 100

Image is Everything

- Made in Sweden
- New shade 3 grind feature
- New smooth ratchet head harness
- High impact to Australian & New Zealand Standards (AS/NZS 1337)
- Speedglas optical quality and comfort
- TST (TIG Sensor Technology) reacts down to 10 amps
- Magnifying lens holder
- Shades 3/8-12
- Industry leading 3 year warranty on lens

15%
OFF



Description	Part No.	Inc.GST
A Ninja	AWS751120	\$311.65
B Trojan Warrior	AWS751620	\$349.40
C Xterminator	AWS752220	\$349.40
D Ice Hot	AWS752520	\$349.40

Available in selected Gas & Gear stores

Speedglas™



15%
OFF

3M Welding Respirator Kit GP2

- This kit is designed to provide respiratory protection in a convenient and easy way and is an ideal solution to get you started.
- Kit includes a 3M™ facepiece, filters, a pair of 3M™ earplugs, 3M™ respirator cleaning wipes and a 3M™ Respiratory Protection Guide.
- To avoid moisture and contaminant exposure, the respirators and accessories are stored in a handy, resealable container.

\$75⁸⁰

Style No. 3M7528

Great discounts on safety clothing!



Bisley 3M Taped Two Tone Hi-Vis Cool Lightweight Shirt

- 100% cotton preshrunk drill 155gsm, 100% cotton open mesh 200gsm
- 3M 8910 reflective tape hoop pattern around body
- Cotton mesh ventilation on back and under arm
- Left pocket with pen division
- Full gusset sleeve cuff
- Colours: Yellow/Navy (TT01)
- Sizes: Medium-XL, 2XL



30% OFF

\$41³⁰ EACH

Style No. BS6896

Bisley Two Tone Hi-Vis Drill Shirt

- 100% cotton preshrunk drill 190gsm
- Left pocket with pen division
- Two button adjustable sleeve cuff
- Colours: Orange/Navy (TT02)
- Sizes: Medium-2XL



30% OFF

\$27⁰⁰ EACH

Style No. BS6267



40% OFF

ESCAPE™ Socks

Made from premium quality yarns. Soft to touch. Very comfortable.

- 92% bamboo fibre, 8% elastane
- Anti-bacterial
- Navy only

\$10⁰⁰ per pair

Size	Part No.
6-10	E600005/NY/6-10
11-12	E600005/NY/11-12
12-15	E600005/NY/12-15

Bisley Original Cotton Drill Work Pants

- 100% cotton preshrunk drill 310gsm
- Mobile phone pocket
- Single front pleats
- Coin pocket in waistband
- YKK zipper
- Colours: Navy (BPCT)
- Sizes: 82R-97R, 102R



30% OFF

\$27⁰⁰ EACH

Style No. BP6007

Bisley Original 8 Pocket Cargo Pants

- 100% cotton preshrunk drill 310gsm
- Adjustable side tab on waistband
- YKK zipper
- Two side welt pockets
- Two side cargo pockets with touch tape flaps
- Colour: Navy (BPCT)
- Sizes: 82R-97R, 102R



30% OFF

\$30⁵⁰ EACH

Style No. BPC6007

Keep dry in the wet

ESCAPE™ Isa Jacket and Pants

High visibility breathable jacket that's fully waterproof for day and night use. Upper back cooling vents and mesh lining help keep air flowing for extra wearer comfort. Heavy-duty zipper, two extended hip pockets and concealed hood. Neoprene storm cuffs help keep water out and the wearer dry.

- 300D Oxford/Polyurethane outer shell
- Fully waterproof with sealed seams
- Day/Night Use
- AS/NZS 4602.1999
- Colour: OR (Orange)
- Sizes: L-2XL



40% OFF

Description	Colour	Style No.	Inc.GST
ESCAPE™ Isa Jacket	Orange	E400030/OR/size	\$76.80
ESCAPE™ Isa Pants	Orange	E400040/OR/size	\$35.80

Available in selected Gas & Gear stores



20% OFF

Steel Blue Safety Boots*

Sizes: 7-13 (7.5-12.5)

Step into comfort

Description	Colour	Part No.	Inc.GST
1 Hobart elastic sided work boot	Black	312101/BLK/size	\$129.30
2 Argyle lace up safety boot	Black	312102/BK/size	\$143.99
	Wheat	312102/WHT/size	
3 Argyle with bump cap and zipper boot	Black	332152/BK/size	\$161.70
	Wheat	332152/WT/size	
4 Argyle safety cap with zipper boot	Black	312152/BLK/size	\$157.85

*Colour, style and sizes may vary between stores.

20% OFF a selected range of MIG & TIG consumables



Front Ends, Liners & Nozzles

Description	Part No.	Inc.GST
Front End Kit MB15AK x1	BP002.0000	\$25.55
Front End Kit MB24KD x1	BP012.0000	\$30.10
Front End Kit MB36KD x1	BP014.0000	\$36.65
Liner Insul 4m Red 0.9-1.2mm	BP124.0031	\$12.65
Nozzle Cylinder MB36KD x2	BP145.0045	\$24.40
Nozzle Con MB36KD x2	BP145.0078	\$22.19

Contact Tips & Tip Holders

Description	Part No.	Inc.GST
Contact Tip 0.9mm M8 x10	BP140.0214	\$16.75
Contact Tip 1.2mm M8 x10	BP140.0442	\$16.75
Contact Tip 1.0mm M6 8mm Al x10	BP141.0006	\$16.60
Contact Tip 1.2mm M8 Al x10	BP141.0015	\$20.40
Contact Tip Holder MB24KD x2	BP142.0003	\$5.15
Contact Tip Holder MB36KD M8 x2	BP142.0020	\$16.75

Collets, Collet Bodies & Nozzles

Description	Part No.	Inc.GST
Collet 1.6mm 17, 18, 26 (5pk)	B10N23	\$9.20
Collet 2.4mm 17, 18, 26 (5pk)	B10N24	\$9.20
Collet 3.2mm 17, 18, 26 (5pk)	B10N25	\$9.20
Collet Body 3.2mm 17, 18, 26 (5pk)	B10N28	\$21.30
Collet Body 1.6mm 17, 18, 26 (5pk)	B10N31	\$21.30
Collet Body 2.4mm 17, 18, 26 (5pk)	B10N32	\$21.30
Nozzle Alumina 10mm 17, 18, 26 (5pk)	B10N48	\$17.84



Don't let changes to the refrigerant gas legislation leave you in the cold.

We're here to help.
Contact the BOC Customer Engagement Centre on 131 262.

Your nearest BOC location

*Gas Depot only

ACT		
Canberra	9 Barrier St, Fyshwick	(02) 6280 6921
NSW		
Brookvale	40 Orchard Rd	(02) 9939 1000
Gosford West	258 Manns Rd	(02) 4324 5444
Lismore	11 Snow St	(02) 6621 2739
Marayong	342 Vardys Rd	(02) 9622 1988
Minto*	Cnr Ben Lomond Rd and Carey Grv	(02) 9820 1622
Moorebank	Cnr Seton Rd and Regents Crs	(02) 9600 9900
Muswellbrook	Lot 105, Carramere Rd	(02) 6541 0544
Newcastle	73A Elizabeth St, Tighes Hill	(02) 4940 0399
Orange	16 Peisley St	(02) 6362 6022
St Marys*	116 Forrester Rd	131262
St Peters	3 Burrows Rd Sth	(02) 9557 6660
Tamworth	2C Belmore St	(02) 6701 8600
Wagga Wagga	48-50 Hammond Ave	(02) 6921 5833
Wetherill Park	440 Victoria St	(02) 9616 3333
NT		
Alice Springs	57-59 Elder St	(08) 8952 4922
Darwin	1227 Winnellie Rd, Winnellie	(08) 8984 3811
QLD		
Bundaberg	50 Enterprise St	(07) 4152 3055
Cairns	47-51 Buchan St	(07) 4035 4616

Gladstone	Red Rover Rd	(07) 4972 2533
Labrador	3 Telford Plc	(07) 5537 3622
Mackay	45-51 Maggiolo St, Paget	(07) 4968 2222
Mt Isa	1a Traders Way	(07) 4743 8811
Rockhampton	17 McLaughlin St, Kawana	(07) 4924 7300
Rocklea	1688 Ipswich Rd	(07) 3212 4227
Sunshine Coast	8 Robert St, Kunda Park	(07) 5476 6544
Toowoomba	327 Taylor St	(07) 4633 2900
Townsville	370 Ingham Rd	(07) 4728 8677
Virginia	Cnr Sandgate Rd and Vauxhall St	(07) 3865 3955
SA		
Athol Park	246 Grand Junction Rd	(08) 8447 6985
Lonsdale	22 O'Sullivan Beach Rd	(08) 8326 6755
Mile End South	291 South Rd	(08) 8443 3519
Mt Gambier	4 Graham Rd	(08) 8725 9011
Olympic Dam*	20 Gunson St, Roxby downs	(08) 8671 3289
Whyalla	McBryde Tce	(08) 8645 7555
TAS		
Burnie	21 Strahan St	(03) 6431 9292
Devonport	41-43 Don Road	(03) 6424 4388
Hobart	21 Derwent Pk Rd, Derwent Pk	(03) 6272 6844
Launceston	164 Invermay Rd, Invermay	(03) 6326 4666

VIC		
Ballarat	901 Latrobe St West	(03) 5336 1322
Bayswater	Cnr Dorset Rd and Ramage St	(03) 9720 9988
Bendigo	104 Strickland Rd	(03) 5442 3366
Campbellfield	Cnr Leader and Scammel Sts	(03) 9308 9499
Dandenong	60-64 Greens Rd	(03) 9792 1700
Geelong North	271 Thompsons Rd	(03) 5272 2654
Moorabbin*	59 Cochrane Rd	(03) 9532 2422
North Laverton	4 Pipe Rd	(03) 9315 2290
Preston	90 Bell St	(03) 9487 8500
Shepparton	220 Benalla Rd	(03) 5821 5144
Wodonga	12A Osburn St	(02) 6024 7922
WA		
Broome	36 Mavis Road	(08) 9195 0057
Bunbury	8 Profit St	(08) 9721 1217
Canning Vale	57-61 Baile Rd	(08) 9456 6776
Geraldton	287 Place Rd	(08) 9964 2807
Kalgoorlie	54 Great Eastern Highway	(08) 9021 1725
Karratha	987 Croydon Rd	(08) 9185 2933
Malaga	59 Kent Way	(08) 9249 3699
Port Hedland	17 Steel Loop, Wedgefield	(08) 9172 3456
Welshpool	234 Welshpool Rd	(08) 9458 5759

Open a BOC account



Go online boc.com.au



BOC Gas & Gear Stores



Call 131 262

All savings and offers apply to list price sales of selected items. Bonuses only available with purchase of advertised lines from BOC Gas & Gear Stores. Advertised prices are inclusive of indicated discounts. Product range and stock availability may vary from store to store. Every product in this catalogue can be ordered through your local BOC Gas & Gear Store even though they may not have it immediately available from stock. Promotional pricing in this catalogue is not applicable to customers who already have agreed special pricing on a particular product/s. If a customer has special pricing loaded for a particular product(s) on their account, they will not be eligible for any promotional pricing for that product(s), including when the promotional pricing is cheaper. Not all products advertised may be available online at boc.com.au. Additional freight charges may apply in some areas. Promotion prices and offers valid from 01/02/18 until 31/03/18 or while stocks last. No rainchecks. Note: While all due care has been taken in the preparation of this document, BOC shall not be liable for any inaccuracies or omissions which may occur herein. BOC reserves the right to change product specifications without notice.

20% OFF these Bottlechock products



Comply to AS/NZS standards for safe storing and handling of cylinders in your workshop or ute.

Compact and packaged for easy storage they include Bottlechock restraints, brackets and pins to grip each individual cylinder in two places. The two independent brackets provided can be fixed at heights to suit your application. Kits for multiple cylinders have extended brackets to suit 2.

Medium Cylinder Kits (160-230 mm dia)
(e.g. D-E size and G steel)

Large Cylinder Kits (245-375 mm dia)
(e.g. G Acetylene, larger LPG, Refrigerants, Propane)

Description	Suits	Part No.	Inc. GST
Galvanised bracket	1 Large cylinder	G1L	\$158.40
	1 Medium cylinder	G1M	\$136.00
	2 Medium cylinder	G2M	\$252.80
Bench Bracket	1 Medium cylinder	BRLABM	\$103.20

Available in selected Gas & Gear stores



20% OFF



Bottlechock Trolley

• Easy roll

Size (mm)	Part No.	Inc. GST
Medium cylinder	TRER	\$1,085.60



agengineering.com.au

A&G Engineering is Australia's leading fabricator of stainless steel tanks and vessels. For over 50 years, A&G Engineering has been at the forefront of stainless steel tank design and manufacture; providing complete engineering solutions for industries such as food and beverage, fuel, mining, oil and gas, agriculture, chemical and water treatment.

BOC is proud to supply A&G Engineering services with the industrial gas, equipment and technical expertise they need to deliver the best quality products for their customers.

BOC Limited ABN 95 000 029 729
10 Julius Avenue, North Ryde NSW 2113, Australia
Phone 131 262, Fax 132 427, www.boc.com.au

Prices include GST. While stocks last. Sorry, no rainchecks. BOC is a Member of The Linde Group.
BOC is a trading name of BOC Limited. © BOC Limited 2018. MP17-0171 FDAUS 0118

BOC

Gas & Gear